

---

## WELCOME!

Welcome to the ENGEO newsletter! This month, we're sharing a look at our team in action, spotlighting upcoming conferences where ENGEO voices are at the table, and highlighting some of the meaningful healthcare projects our teams are delivering across the country.

We hope you enjoy it!



## IN THIS ISSUE

FUNGEO

Conferences & Events

Project Highlights

---

## FUNGEO



## CONFERENCES & EVENTS



AMFP NORTHERN CALIFORNIA

May 6, 2026  
4 pm - 6 pm  
Sacramento Area

**SAVE THE DATE!**

**Implementing the Next Phase of Seismic Compliance: A Case for What Works**

Moderator: **David Teague** (ENGEIO)

Panelists: **Tyson Johnson** (Regional Medical Center), **Devon Lumbard** (Dodge Bros), **Nick Palumbo** (Swingline), **All Sumer** (HCR/HDFPC)

### AMFP NorCal

May 6, 2026 | Sacramento, CA

Seismic compliance in healthcare is a pressing topic across California right now, and ENGEIO's **David Teague** will be moderating the conversation at the upcoming AMFP NorCal event alongside a panel of industry leaders. If your work touches healthcare facilities, this is one worth attending.



The Evolution of Bishop Ranch  
Panel Discussion & Tour

**MEET THE SPEAKERS**

Speakers: **Alex Mebran Jr.** (Bishop Ranch by Sunet Development Company), **Uri Eliahu** (ENGEIO), **Joe Kirschhofer** (AvalonBay Communities), **Cindy Yee** (City of San Ramon), **Chris Hiegglund** (BAR Architects)

### ULI San Francisco: The Evolution of Bishop Ranch Panel Discussion & Tour

May 14, 2026 | San Ramon, CA

Bishop Ranch is at a pivotal moment, and ENGEIO is glad to be part of the conversation. ENGEIO President and CEO **Uri Eliahu** will be contributing to this ULI San Francisco program, bringing ENGEIO's perspective on redevelopment and long-term community performance. A special shoutout to **Mila Kopelovich** for her role in helping plan the program through her work on the ULI East Bay board.



## DBIA-WPR 2026 Education Summit & Awards

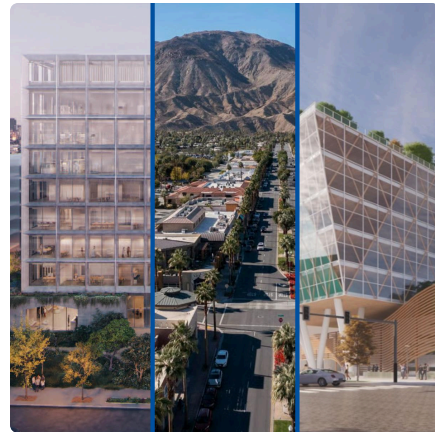
May 19, 2026 | Scottsdale, AZ

ENGEO's **Joe Tootle** will be joining a panel of industry experts in Scottsdale, AZ to present on the collaborative engineering effort to stabilize a critical coastal rail corridor in San Clemente. A great opportunity to see ENGEO represented on the design-build stage!

## PROJECT HIGHLIGHTS

### Healthcare Spotlight

This month, we're highlighting three healthcare projects where ENGEO's geotechnical expertise is front and center. At the Potrero Power Station in San Francisco, ENGEO is delivering foundation and shoring solutions for a new UCSF cancer treatment center, navigating complex subsurface conditions with excavations reaching 50 to 70 feet below grade. In Southern California, ENGEO led geotechnical engineering services for NPC-5 seismic compliance upgrades at multiple acute care hospital facilities. And in Memphis, Tennessee, ENGEO is leading the geotechnical program for the Regional One Health campus, a once-in-a-generation investment supporting performance-based seismic design for the approximately 640,000 square foot facility.



### Connect with us!



ENGEO Incorporated | 2633 Camino Ramon, Suite 250 | San Ramon, CA 94583 US

[Unsubscribe](#) | [Update Profile](#) | [Constant Contact Data Notice](#)