

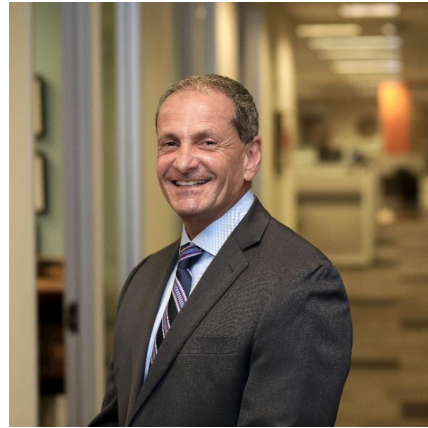


ENGEVIEW

Here is What Awaits You!

- Surface Water Management Overview
 - Awards and Licenses
 - ENGE News and More!

A Message from ENGE President



Last year was another award-winning year for ENGE. We accomplished ambitious goals in technical excellence throughout the organization. We also built many new client relationships and welcomed several passionate, brilliant new team members.

This year, we eagerly hunt for new efficiencies, technical skillsets, and technological capabilities. We look forward to being on the cutting edge of technology and integration of AI in our processes. As you'll read in this issue of the ENGE View, winters bring challenging projects, which our Surface Water Engineering team managed with aplomb.

Thank you for your ongoing trust and support. We hope you enjoy this issue of the ENGE View and look forward to sharing 2024's milestones with you!

Surface Water Management Overview



ENGE's Surface Water Management Services

ENGE specializes in complex creek restoration projects, bridge scour protection, and stormwater requirements, both during and post-construction.

ENGE offers traditional **Hydraulics and Hydrology Services** as well as **Stormwater Management Services** to meet new water quality standards.

Select Surface Water Resources Engineering Team Members Based in US/NZ

Brooke Spruit, PE
Chase Hemming, PE, CMEngNZ
Francis Smith
Jonathan Buck, GE, LEED AP, QSD
Sean Cleary, PE, QSD
Victoria Drake, PE, QSD, ToR

Select Surface Water Engineering Team Members

- Brooke Spruit, PE
- Chase Hemming, PE, CMEngNZ
- Francis Smith
- Jonathan Buck, GE, LEED AP, QSD
- Sean Cleary, PE, QSD
- Victoria Drake, PE, QSD, ToR

[Learn More](#) about their journey.

ENGE Global Surface Water Management Projects



San Francisco - Oakland Bay Bridge Foundation Removal

Collaborating closely with **Caltrans** and the **Kiewit/Manson JV Team**, we managed the Stormwater Pollution Prevention Plan (SWPPP) and ensured regulatory compliance throughout the project. Utilizing innovative solutions, including the use of a "bubble curtain" during underwater blasting, the environmental impact was significantly minimized.

This project underscores our commitment to sustainability and innovation in engineering.

[Learn More](#)



ENGE's Emergency Response: Oakland Zoo Entrance Repair

On December 31, 2022, a sudden collapse of a 72-inch culvert beneath the entrance road to the Oakland Zoo disrupted operations, leading to a shutdown and substantial economic losses.

We performed permitting support, monitored the creek during storms and heavy flow, prepared construction plans, and performed testing-and-observation services for the project. We also performed hydraulic calculations and developed plans and a list of bid items for removal of the failed culvert and construction of the new culvert.

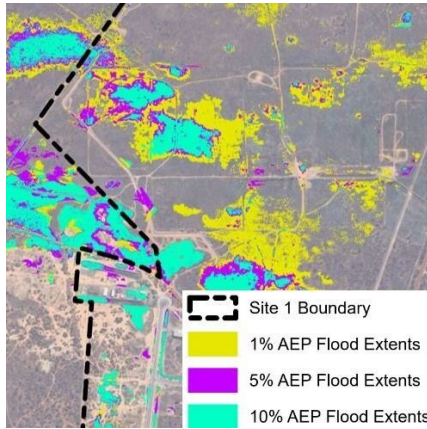
[Learn More](#)



Ongarue River

The purpose of our recent assessment was to aid KiwiRail in prioritising where to implement river stabilization measures in order to increase the NIMT's long-term resiliency. In the study area, the Ongarue River is approximately 30 m (100 feet) wide and characterised by large meanders cutting through pasture-converted floodplains. The maximum recorded flowrate in the river is approximately 570 cubic meters per second (20,000 cubic feet per second).

[Learn More](#)



Australia Flood Assessments

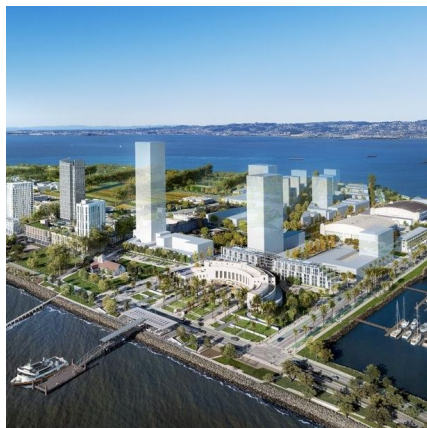
We recently performed flood assessments for two clean energy projects – one involving a hydrogen power plant and the other a wind farm.

The Hydrogen Jobs Plan is a project for the Government of South Australia involving the construction of a world leading hydrogen power plant, electrolyser, and storage facility.

The Carmody Hill Wind Farm project comprises 45 wind turbine generators and two substations. ENGEО's flood level assessment was used by the project's civil engineer to determine finished floor levels and design the stormwater conveyance system.

[Learn More](#)

ENGEО Excellence



Let's Celebrate Excellence!

This year ENGEО won the **2023 ASCE Region 9 Outstanding Geotechnical Engineering Project Award** for Treasure Island Development Phase 1.

[Learn More](#) about this award.

[Learn More](#) about this project.



Professional Licenses

Congratulations to newly licensed individuals:

Randy Hildebrant,
Professional Engineer, HI
Anne Robertson,
Professional Engineer, WA
Jeffrey Fippin,
Professional Engineer, WA
Lydia Kelly,
Professional Engineer, CA

We are honored to have over **70 licensed** professionals **PE/GE/CEG/PG** in the states of **CA, WA, NV, HI, NC, TX, UT, and Guam**.



Congratulations to Newly Promoted Associates and Principals!

These outstanding individuals got promoted to **Associates**:

Ian McCreery, PE, GE
Matt Packard, CMEngNZ,
Adam Smith, CMEngNZ,
Alexis Colina, CPEng, RPSEQ, NER
Mark Broughton, CPEng

Congratulations to new talented **Principals**:

Jeff Braun, PE, GE, PM
Matthew Swanson, PE, QSD
Benjamin O'Loughlin, CMEngNZ
Josh Armstrong, RPGEО
Tomasz Krawczynski, CMEngNZ-RPEQ
David Brodie, BEng(Hons)

[Learn More](#) about their bio.

Save the Date to Celebrate the Relocation of Our Santa Clara Office!



Secure Your Spot on the Guest List for Our Santa Clara Office Open House

Don't Miss Out!

Our San Jose office recently moved to Santa Clara, and we will be hosting an open house on **Thursday, May 16th, 2024, from 4 PM to 8:00 PM**.

Drinks and food will be served!

Send an email to lmokra@engeo.com to secure your spot.



